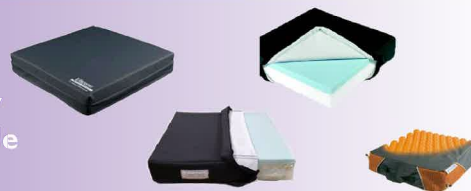


## Medical Cushions

## Medical Cushions

GP Medical has a cushion suitable for people on all levels of the pressure ulcer risk scale. We aim to provide solutions to the pain and discomfort caused by pressure sores and pressure ulcers on the skin of people who have limited mobility.



**The Polyair®** range of medical cushions are for patients with any level of risk and for people who already have pressure ulcers.

The Polyair cushion has an electronic pressure measuring device, included, that enables the lay person to set it up because the gauge is scientific thus removing arbitrary and often incorrect set up - no longer necessary to use your hand as a gauge. Polyair cushion valves are all non-leak, meaning that if the pump is not attached, the valve will not leak the air from the cushion.

<b>POLYAIR® 60 P301CM - 6cm / Single valve</b>		<b>Weight Range</b>
P301CM40401HW	40cm x 40cm / 16 x 16"	30 - 80kgs
P301CM46461HW	46cm x 46cm / 18 x 18"	40 - 140kgs
<b>POLYAIR® 100 P302CM - 10cm / Single valve</b>		
P302CM40401HW	40cm x 40cm / 16 x 16"	40 - 80kgs
P302CM46461HW	46cm x 46cm / 18 x 18"	40 - 140kgs



<b>POLYAIR® 60 P301C - 6cm / Dual valve</b>		<b>Weight Range</b>
P301C40401HW	40cm x 40cm / 16 x 16"	40 - 80kgs
P301C40461HW	40cm x 46cm / 16 x 18"	40 - 120kgs
P301C46401HW	46cm x 40cm / 18 x 16"	40 - 120kgs
P301C46461HW	46cm x 46cm / 18 x 18"	40 - 140kgs
P301C51461HW	51cm x 46cm / 20 x 18"	40 - 160kgs
P301C51501HW	51cm x 50cm / 20 x 20"	40 - 180kgs
<b>POLYAIR® 100 P302C - 10cm / Dual valve</b>		
P302C40401HW	40cm x 40cm / 16 x 16"	40 - 80kgs
P302C40461HW	40cm x 46cm / 16 x 18"	40 - 120kgs
P302C46401HW	46cm x 40cm / 18 x 16"	40 - 120kgs
P302C46461HW	46cm x 46cm / 18 x 18"	40 - 140kgs
P302C51461HW	51cm x 46cm / 20 x 18"	40 - 160kgs
P302C51501HW	51cm x 50cm / 20 x 20"	40 - 180kgs



<b>POLYAIR® 60 P301XL - 6cm / Dual valve</b>		<b>Weight Range</b>
P301C56461HW	56cm x 46cm / 22 x 18"	40 - 230kgs
P301C61501HW	61cm x 56cm / 24 x 22"	40 - 270kgs
<b>POLYAIR® 100 P302CXL - 10cm / Dual valve</b>		
P302C56461HW	56cm x 46cm / 22 x 18"	40 - 230kgs
P302C61561HW	61cm x 56cm / 24 x 22"	40 - 270kgs



## Medical Cushions

## Medical Cushions

**Viscotech® Plus** are a high specification composite foam, visco-elastic (memory foam) medical cushion designed to reduce the risk of the user developing pressure ulcers while sitting. The cushion offers excellent levels of immersion and envelopment, whilst being lightweight.

Covers are available as a cost-effective sewn version or a welded version for maximum infection prevention. Both covers feature a non-slip base.

**7.5cm thickness / Suitable for patients up to 108kgs / Cannot be flipped / up to High Risk**

**Viscotech® Plus HD** are suitable for patients weighing up to 178kgs. Available with sewn or welded PU covers.

**7.5cm thickness / Suitable for patients up to 178kgs / Cannot be flipped / up to High Risk**

41cm x 41cm x 7.5cm  
43cm x 43cm x 7.5cm  
46cm x 46cm x 7.5cm  
41cm x 46cm x 7.5cm

46cm x 41cm x 7.5cm  
51cm x 46cm x 7.5cm  
46cm x 51cm x 7.5cm



**Viscotech® Plus Contour Cushions** are a contoured memory foam medical cushion designed to reduce the risk of pressure ulcers. It is a high specification composite visco-elastic foam cushion for use by people at high risk of pressure ulcers. The contouring provides stability and increases the surface area in contact with the cushion so that pressure is distributed over a larger area.

Covers are available as a cost-effective sewn version or a welded version for maximum infection prevention. Both covers feature a non-slip base.

**7.5cm thickness / Suitable for patients up to 108kgs / Cannot be flipped / up to High Risk**

41cm x 41cm x 7.5cm  
43cm x 43cm x 7.5cm  
46cm x 46cm x 7.5cm  
41cm x 46cm x 7.5cm

46cm x 41cm x 7.5cm  
51cm x 46cm x 7.5cm  
46cm x 51cm x 7.5cm



**Viscotech® Supreme Contour Gel** is a contoured composite visco-elastic foam medical cushion and is designed for users at very high risk of pressure ulcers. The cushion is contoured to maximise the user's contact area and has a visco-elastic memory foam top. Beneath this, in the sacrum area, the cushion contains a gel sachet, which provides increased pressure distribution.

This solution is suitable for bariatric clients and disabled people requiring stability in a wheelchair cushion with very high levels of pressure relief. It offers stability with great pressure distribution.

Covers are available as a cost-effective sewn version or a welded version for maximum infection prevention. Both covers feature a non-slip base.

**10cm thickness / Suitable for patients up to 178kgs / Cannot be flipped / Very High Risk**

41cm x 41cm x 10cm  
43cm x 43cm x 10cm  
46cm x 46cm x 10cm  
41cm x 46cm x 10cm

46cm x 41cm x 10cm  
51cm x 46cm x 10cm  
46cm x 51cm x 10cm



## Medical Cushions

## Medical Cushions

Our extensive range of **Sumed Medical Cushions** are all made in the UK and come with a generous manufacturers warranty.

Each cushion is protected by a waterproof and vapour permeable polyurethane material which is either sewn for cost-effectiveness or precision welded to prevent fluid ingress. The two-way stretch fabric has an integral antibacterial agent and a wide flap to protect the zip area from fluid spills. The zip should always be placed at the back of the chair away from the patient's legs. These covers can be laundered in accordance with normal hospital procedures including the use of decontaminants.

**ViscoPro Cushions** is made entirely from high density visco-elastic memory foam and is designed to reduce the risk of pressure ulcers. Like any visco-elastic foam, it is made to mold to the users body, therefore maximising contact area and reducing levels of pressure.

### 5cm thickness:

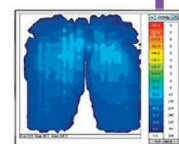
#### For high risk up to 100kg

38cm x 38cm/40cm/43cm  
40cm x 40cm/43cm/46cm  
43cm x 43cm/53cm  
46cm x 43cm/46cm/51cm/53cm/55cm  
48cm x 43cm/46cm  
51cm x 43cm/46cm

### 7.5cm thickness:

#### For very high risk up to 150kgs

38cm x 38cm/40cm/43cm  
40cm x 40cm/43cm  
43cm x 43cm  
46cm x 40cm/43cm/46cm/51cm/53cm  
48cm x 43cm/46cm/48cm  
51cm x 40cm/43cm  
53cm x 43cm /46cm



**Viscotech® Thin Cushions** are a high density foam medical cushion which offers some pressure relief for users who are at risk of developing pressure ulcers. It is the thinnest cushion in the Viscotech range, so is suitable for patients with the lowest level of risk of pressure ulcers. Sewn PU Cover

**5cm thickness / Suitable for patients up to 108kgs / Can be flipped / Low Risk**

41cm x 41cm x 5cm  
43cm x 43cm x 5cm  
46cm x 46cm x 5cm  
41cm x 46cm x 5cm

46cm x 41cm x 5cm  
51cm x 46cm x 5cm  
46cm x 51cm x 5cm



**Viscotech® Standard Cushions** are a high specification foam medical cushion. Is a 7.5cm thick castellated foam cushion. Is lightweight and offers envelopment of the client. Sewn PU Cover.

**7.5cm thickness / Suitable for patients up to 108kgs / Can be flipped / Low to Medium Risk**

**Available also:**

**Viscotech® Standard HD Cushions for patients up to 178kgs / Medium Risk**

41cm x 41cm x 7.5cm  
43cm x 43cm x 7.5cm  
46cm x 46cm x 7.5cm  
41cm x 46cm x 7.5cm

46cm x 41cm x 7.5cm  
51cm x 46cm x 7.5cm  
46cm x 51cm x 7.5cm





## Medical Cushions

## Medical Cushions

**System® Gel Cushions** use a viscoelastic high-reticulated polyurethane gel - avoids gel migration and prevents the bottoming effect of the bony prominences.

Used when a seated position is necessary resulting from disease or handicap and there is at the same time an increased risk of pressure sores.

**Low risk / patients up to 120kgs**

P311C with POLYMAILLE cover

40 x 40cm

45 x 43cm



**System® Duogel** use a viscoelastic high-reticulated polyurethane gel but with an innovative multi bearing surface. The Duogel reduces the maximum pressure exerted on the sensitive areas by increasing the contact surface between the patient and the cushion.

**Low risk / patients up to 140kgs**

P311CD

40 x 40cm



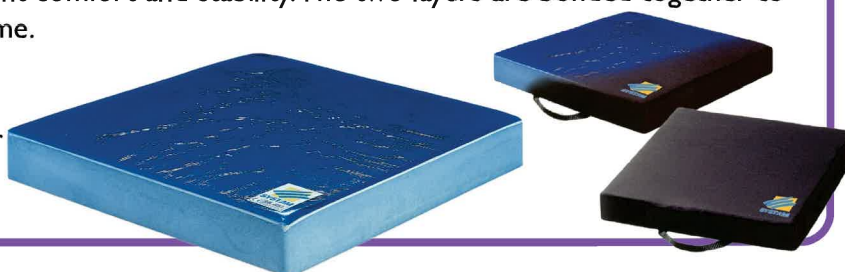
**System® Mixte** is a combination High Resilience Foam & Viscoelastic Moulded Gel Cushion. Effective distribution of pressure providing patient comfort and stability. The two layers are bonded together to eliminate the risk of separating over time.

**At to High risk**

P314C with POLYMAILLE cover

40 x 40cm - up to 90kgs

45 x 43cm - up to 120kgs



**System® Duoform®** Cushions are made of 2 Viscoelastic Gels molded with an Anatomic Polyurethane High Resilience Foam. The anatomical shape increases contact surface with the support, thus producing reduction in transcutaneous pressures. The Contouring improves patient stability and support.

The two layers are bonded together to eliminate the risk of separating over time.

**Increased to High risk**

P341C with POLYMAILLE cover

36 x 36cm - up to 70kgs

42 x 42cm - up to 110kgs

42 x 46cm - up to 120kgs

45 x 42cm - up to 120kgs

45 x 46cm - up to 140kgs

51 x 46cm - up to 160kgs



**System® VISCOFLEX® Cushion** is anatomically molded, features memory effect and is crafted from high quality viscoelastic foam. The foam is designed to adapt gently and accurately with the seating area contour, which results in enhanced stability. Together with its foam mechanical elements and its anatomic shape, the viscoelastic foam significantly increases the contact area with the cushion, which results in reduced transcutaneous pressure hence improving overall comfort, stability and comfort. Designed specifically to prevent pressure sores, Viscoflex® offers unmatched resistance and is a class leading industrial grade foam that prevents the effects of punching.

**Designed for use by those assessed as moderate to high risk of pressure injury.**

P361C with POLYMAILLE cover

36 x 36 x 8cm - 50kgs

42 x 42 x 8cm - 100kgs

42 x 46 x 8cm - 110kgs

45 x 42 x 8cm - 110kgs

45 x 46 x 8cm - 130kgs

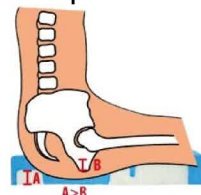
51 x 46 x 8cm - 150kgs

51 x 50 x 8cm - 160kgs



**System® VISCOFLEX®+ Cushion** is a highly effective cushion constructed from viscoelastic memory foam. Suitable for patients with low levels of mobility, it has excellent pressure relieving qualities which makes it suitable for patients at a high to very high risk of pressure sore development. This cushion's anatomically shaped design improves positioning, stability and comfort and also increases the contact area of the cushion with the user's body. In addition to all the features of the System Viscoflex Pressure Relief Cushion, this cushion also includes an internal skeleton of high-capacity weight-bearing foam. This structures the cushion and optimises weight distribution.

*There is an anti-punching foam insert (A) that is specifically positioned in relation to the ischia (B). This distributes the pressure to the buttock peripheral zone, which stabilises and supports the pelvis and prevents it from reaching the bottoming zone.*



*The pre-ischial ridge of the cushion sits beneath the back of the legs, preventing forward sliding and maintaining a proper spinal position. The prevention of sliding bolsters stability, ensuring reliable and consistent positioning.*

**Designed for use by those assessed as high to very high risk of pressure injury.**

P361CA with POLYMAILLE cover

36 x 36 x 8cm - 70kgs

42 x 42 x 8cm - 110kgs

42 x 46 x 8cm - 120kgs

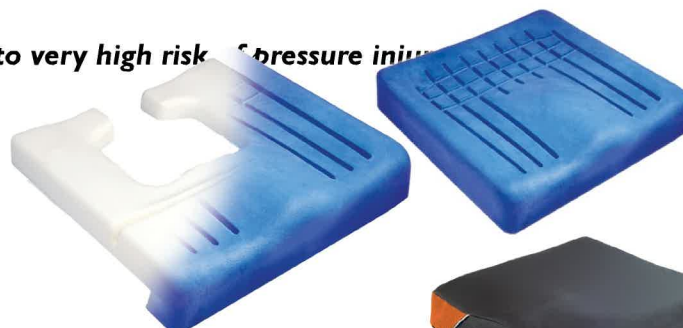
45 x 42 x 8cm - 120kgs

45 x 46 x 8cm - 130kgs

51 x 46 x 8cm - 150kgs

51 x 50 x 8cm - 160kgs

Custom sizes available: 42 x 50 / 45 x 50 / 56 x 46 / 61 x 50





**System® VISCOFLEX®+ With Pommel** combines the features and benefits of the VISCOFLEX®+ with an innovative stabilising pommel, that is adjustable and completely separate from the cushion. The System® stabilising pommel has its own cover attached on the cushion. This simplifies the setting and adjusting of the equipment and the transferring to and from the chair.

The Pommel provides a better seating position - prevention of the forward sliding and falls without the need for restraints / seatbelts



Forward sliding in the sitting position is a very frequent postural deficit in geriatrics and attributes to the major risk factor of sacro-coccygeal pressure sores. Forward sliding stabilised by a pelvic pommel thus blocks the pelvis on the sagittal plane. The Pommel allows precise adjustment to all patient morphologies easily and respects the natural curves and opening of the lower limbs.

*The System® VISCOFLEX®+ With Pommel posture support cushion provides a solution to forward sliding while promoting patient safety and preserving their dignity.*

**Designed for people at risk of forward sliding and at a high to very high risk of pressure injury**

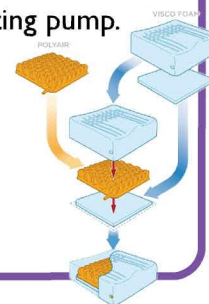
P36 ICP with POLYMAILLE cover  
42 x 42 x 8cm - 100kgs  
45 x 42 x 8cm - 110kgs  
45 x 46 x 8cm - 130kgs



**System® VISCOFLEX® Air Cushion** is an adjustable anatomically molded viscoelastic foam cushion with an air cells insert. The efficiency of the air cells technology combined with the comfort of the viscoelastic foam with memory effect, optimizes the pressure distribution according to patient's morphology and therewith it enables a customized immersion for an effective pressure sore prevention. The very high density viscoelastic foam with memory effect offers a precise moulding of the body and improves the patient's comfort and stability with an anti-bottoming layer. The simple and easy customized inflating is achieved with the included single-handed inflating pump.

**Designed for use by those assessed as high to very high risk of pressure injury.**

P36 ICR with POLYMAILLE cover  
42 x 42 x 8cm - 110kgs  
45 x 42 x 8cm - 120kgs  
45 x 46 x 8cm - 140kgs



**System® POLYMAILLE covers** are a hypoallergenic polyurethane cover that have an antibacterial, anti-germ and anti-fungal coating. Has a two-way stretch to ensure comfort for the user and reduce shear forces. They feature a zip that covers 3 sides and a non-slip base.