



# Bure™ Standard/S

StandTall Walker



# Bure™ Standard/S StandTall Walker

**Bure Standard** and **Bure S** is available in three versions; ELECTRIC, GAS and MANUAL. **Bure S** is a narrower version of the **Bure Standard** specially adapted to work in confined spaces. It's perfectly acceptable to retrofit the StandTall Walker gas to electric at a later stage, and in common with all Bure StandTall Walker models it is steplessly adjustable to the desired height.

## Ergonomic Handles

The ergonomically designed handles are steplessly adjustable in every direction for optimum individual adaptation. This is extremely important for stroke patients who can thus reach their "usual" hand position.

## Easily reachable hand controls

The hand controls are located so that both of the carer's and user's hands can easily reach them.

## Power Rise

Bure Standard ELECTRIC and Bure S ELECTRIC provides excellent assistance when helping patients and users stand. Personnel burdens, and thus repetitive strain injuries, are minimised. Depending on their current condition, a number of patients are even able to stand up by themselves using the power rise feature.

## Eminently suitable at home

Bure S is perfectly suited to confined spaces such as at home or in some care accommodation. Bure S will pass through most doorways that are 70 cm or wider.

## Bure S



## ELECTRIC

Bure Standard and Bure S ELECTRIC are ideal for the user who needs a StandTall Walker equipped with power rise and which is capable of height adjustment once the patient is standing.

## GAS

Bure Standard and Bure S GAS is suitable for the user who needs a quality StandTall Walker capable of stepless height adjustment but who does not need assistance from a power rise actuator.



## MANUAL

Bure Standard and Bure S MANUAL is great for the user who needs a good, individually adaptable StandTall Walker but who does not need to adjust the height very often and who has no need of assistance from a power rise actuator.



## Sustainable

The StandTall Walker is designed to last a long while. For example it has an extra reinforcement band around the armrest cushions to prevent splitting from side impacts.

## Stable

The StandTall Walker has anatomical cushions that provide relief for shoulders, arms and the neck and shift the focus to larger muscle groups such as leg and chest muscles instead. This improves stability and makes the walker easier to steer.

## Flexible stepless adjustment

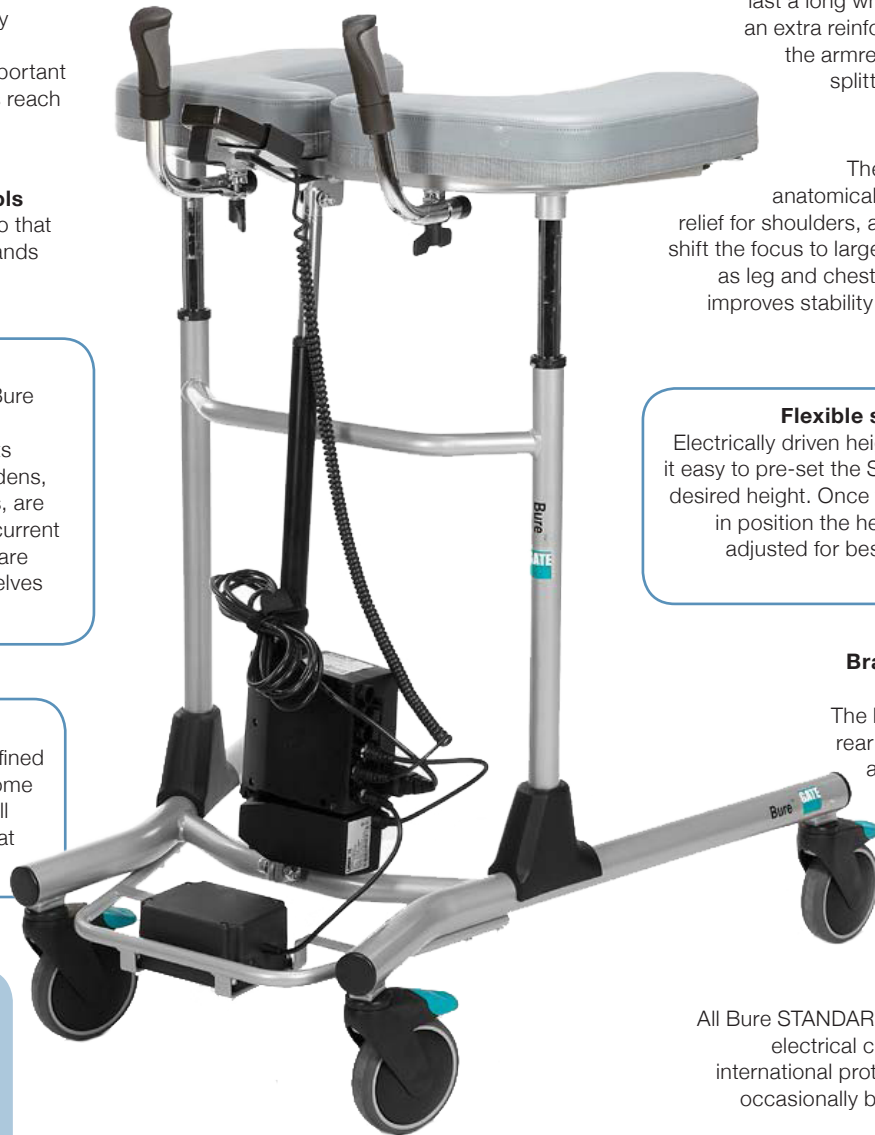
Electrically driven height adjustment makes it easy to pre-set the StandTall Walker to the desired height. Once the patient is standing in position the height can be steplessly adjusted for best comfort and optimal walking support.

## Brakes and directional locks

The handbrake acts on the rear casters and the brake assembly also includes directional locks that make it easier for the user to stay on course when walking.

## Water proofing

All Bure STANDARD and Bure ELECTRIC electrical components have IP 65 international protection ratings and can occasionally be used in damp areas.



## Technical specifications

Dimensions apply to walkers with 125mm castors

CE marked according to MDD 93/42/EEC | Tested and approved to EN 11199-3/2005

| Product Code | Product                  | Width | Max user weight | Length | Height   | Armrests/internal dimension |
|--------------|--------------------------|-------|-----------------|--------|----------|-----------------------------|
| RHGA-56-312  | Bure Standard - Electric | 78cm  | 150kg           | 80cm   | 91-131cm | 25-50cm                     |
| RHGA-56-311  | Bure Standard - Gas      | 78cm  | 150kg           | 80cm   | 91-129cm | 25-50cm                     |
| RHGA-56-310  | Bure Standard - Manual   | 78cm  | 150kg           | 80cm   | 91-133cm | 25-50cm                     |
| RHGA-56-302  | Bure S - Electric        | 66cm  | 150kg           | 79cm   | 91-131cm | 30-45cm                     |
| RHGA-56-301  | Bure S - Gas             | 66cm  | 150kg           | 79cm   | 91-129cm | 30-45cm                     |
| RHGA-56-300  | Bure S - Manual          | 66cm  | 150kg           | 79cm   | 91-133cm | 30-45cm                     |

## Accessories



### Brake Kit Twin

Adds a hand brake so that the user is able to halt movement during walking exercises.

RHGA-56-326-0



### Platform Steel

A flexible alternative when moving a patient a short distance.

RHGA-56-333 (Std only)



### Footplate - Aluminium

A flexible alternative when moving a patient a short distance. Short or Long.

RHGA-56-333-1 / RHGA-56-383 (Std only)



### Drip Stand with Attachment

Creates great ability for a patient to move freely in a room, on the ward or at home.

RHGA-56-338



### Oxygen Bracket

Means that a patient is no longer confined to the bed.

RHGA-56-336



### Side Support

Prevents arms from sliding from armrest cushions and stabilise walking.

RHGA-56-337



### Soft Basket

Basket with attachment has enough room for all the important stuff.



### Height Adapter for STD/S

Provides extra support for tall users and raises the armrest surface by 70 mm.

RHGA-56-327



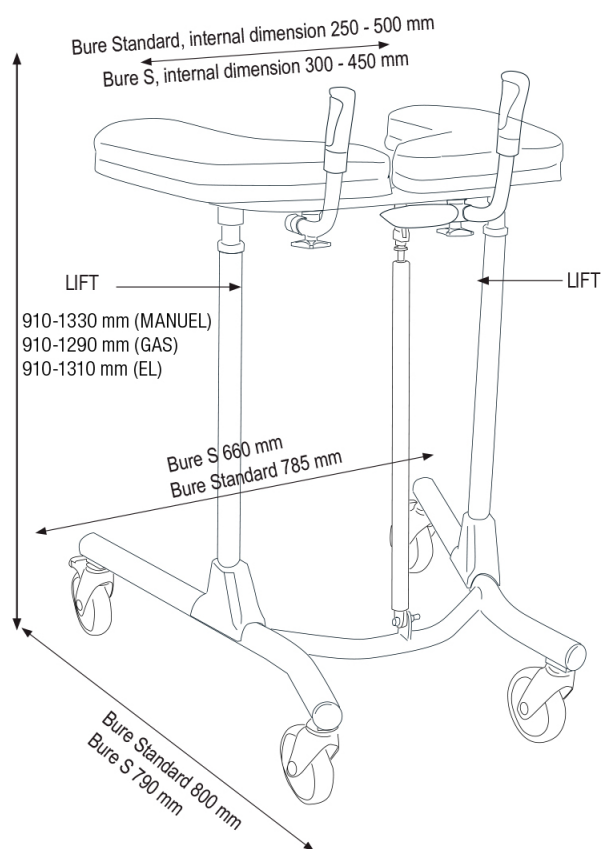
### Stirrup

Stand Tall Walker Part/Accessory: Stirrup (Suitable for all models except for BURE DOUBLE)

RHGA-56-331-1



Castors with brake (various sizes)



## Improved general condition

Apart from being an excellent aid for getting patients up and about, the Stand-Tall Walker is also a valuable rehabilitation tool. Rehabilitation using the StandTall Walker keeps the patient's muscles and alimentary canal active and contributes to improving the general condition of the otherwise bedridden.

Proper support makes it easier for infirm patients or those with weak legs to walk, and some can even manage without the support of healthcare personnel.

## Improved work ergonomics

The Bure StandTall Walker creates opportunities for much better work ergonomics for carers, trainers and anyone working with patients. For example, the open design provides increased manoeuvring space and makes access easier when getting up or dressing. The Bure StandTall Walker contributes to reduced workloads and is an investment in personnel health.

## Enhanced stability

Bure has anatomically designed cushions at a slight incline that help shoulders and arms to relax. The Stand-Tall Walker's design helps to shift the focus from muscles in the hands, arms and shoulders to larger muscle groups such as leg and chest muscles. Stability is improved and the walker is easier to steer at the same time as trunk bending is cushioned and posture improved.



## Other Walkers in the Bure™ StandTall range



**Bure Double** is GATE's most advanced, flexible StandTall Walker. It is equipped with twin electric drives for raising and lowering the table and widening the walking frame.

**Bure™**  
Double Stand Tall Walker



**Bure Ortho** is especially designed for orthopaedics departments and situations that demand extra legroom and room for manoeuvre for the user. **Bure Ortho** has a powerful electric motor for powered height adjustment.

**Bure™**  
Ortho StandTall Walker



**Bure XL** was designed for the bigger, heavier patient and therefore provides extra space and strength. Since extra powerful aids are required in the care and nursing of heavier patients, **Bure XL** is always supplied with electric drives.

**Bure™**  
XL StandTall Walker

## Also Available



**Bure Rise & Go** is an all-round solution that saves space, time and money. Instead of purchasing both hoists and walkers it is probably often sufficient to acquire the flexible, cost effective **Bure Rise & Go**.

**Bure™**  
Rise & Go™



GATE hygiene chairs are available in three different versions. **Amfibi Double** is the most advanced, versatile hygiene chair; it is adjustable in height and tilt angle of inclination. **Amfibi XL** was designed for the bigger, heavier patient, while **Basic** is the simplest version.

**Amfibi™**  
Hygiene Chairs



Distributed by:

For more information, or to find your nearest dealer, call us on 1300 791 404 or visit [www.gaterd.com.au](http://www.gaterd.com.au)

