



# Amfibi™ XL

## Hygiene Commode



# Amfibi™ XL

## Hygiene Commode

GATE hygiene chairs have a unique pillar design for quick and easy seat height adjustment. There is a choice of manual or electric adjustment to suit various needs. Amfibi fits most people no matter how tall, and staff will not need to waste time and energy looking for a suitable hygiene chair for each situation.

**Amfibi XL** was designed for the bigger, heavier patient and therefore provides extra space and strength and electrical height adjustment. Maximum user weight is 250 kg.

### Lockable armrests

Amfibi XL has armrests that can be flipped up and locked in position to make it easier for the patient to be of help with the transfer.

### Plenty of room

Maximum user weight for the Amfibi XL is 250 kg and seat depth is larger than standard. The hygiene chair has also been widened to 64 cm between armrests to provide extra room and good stability.

### Built-in soft seat

The XL's seat and back are adapted for an upright posture that does not close the pelvis. The soft, ergonomic seat (PU) is standard and built in to the chair. It minimizes pressure on the hips, tendons and blood vessels and is designed to suit both men and women.

### Easy to clean

The seat is easy to remove and clean, while its rounded front edge contributes to a comfortable leg position.

### Swing-away, detachable footrests

The footrests flip-up, swing-away and are easily detachable.

Guides and waste containers are available as accessories.

### Durable materials

Manufactured from corrosion-proof materials.

### Easy Control

Electrical adjustment via a cabled remote which is sealed to a high protection class (IP66) for optimal safety.

### Adjustable backstrap

Adjustable backrest The soft, comfortable back-strap relieves pressure on bony areas. It is easily adjustable for best support and seat depth. Machine washable.

### Electric height adjustment

Amfibi XL has a unique pillar design for quick and easy seat height adjustment. The seat can be raised by up to 81 cm from its lowest position and thus requires minimum effort from care personnel.

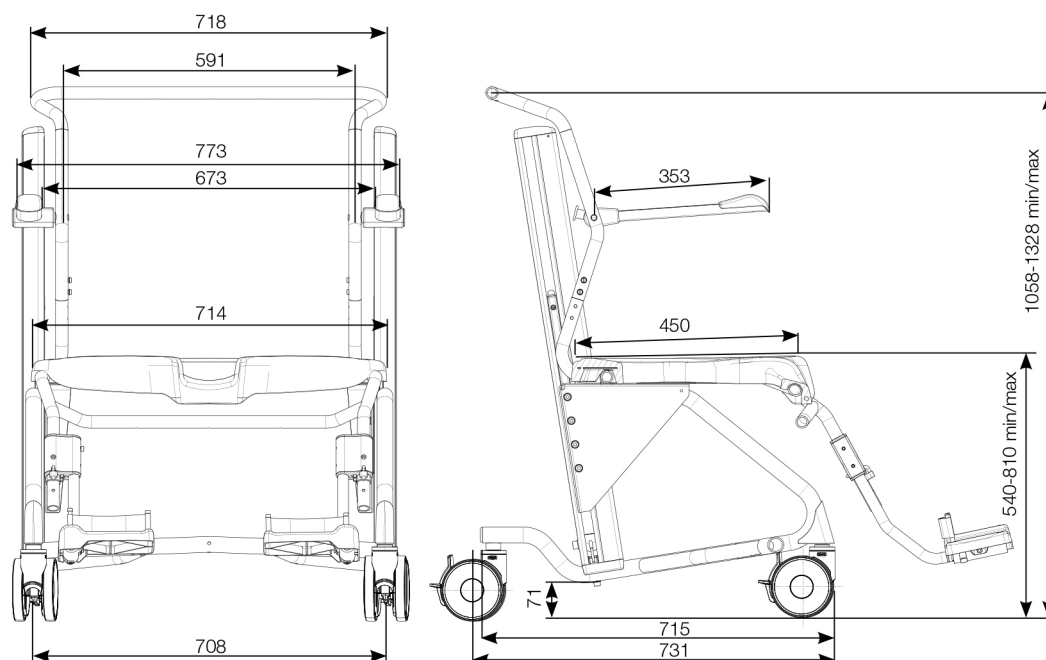


## Technical specifications

Dimensions apply to walkers with 125mm castors

CE marked according to MDD 93/42/EEC

Product Code	Product	Width	Max user weight	Seat Depth	Seat Height	Armrests/internal dimension
RHGA-56-304	Amfibi XL	79cm	250kg	49cm	55-81cm	67cm



## Accessories



**Heel Loops**  
RHGA-56-220



**Safety Bar**  
RHGA-56-212-XL



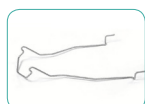
**Side Supports**  
RHGA-56-216



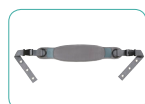
**Splash Guard**  
RHGA-56-213



**Waste Container**  
RHGA-56-209



**Guide (for Waste Container)**  
RHGA-56-218



**Safety Belt Hip**  
RHGA-56-217



**Safety Belt Chest**  
RHGA-56-229



**Amputee Support**  
RHGA-56-228-L/R



**Calf Support**  
RHGA-56-227-L/R



**Footrest**  
RHGA-56-257-L/R



**Castor with brake**  
(Various sizes)

SHI200115-v2.3

## Designed to meet needs

GATE hygiene chairs have a unique pillar design for quick and easy seat height adjustment. There is a choice of manual or electric adjustment to suit various needs. Amfibi fits most people no matter how tall, and staff will not need to waste time and energy looking for a suitable hygiene chair for each situation.

## Everyday life improved

And it goes without saying that Amfibi never compromises on user comfort and personnel ergonomics. Individually adaptable comfort and function makes the hygiene chair a much more

pleasant experience for patient and healthcare staff alike. Amfibi is manufactured from corrosion-proof materials and its actuator can withstand high pressure hot water (IP66).

## Best possible comfort

Users often sit in a chair for a long while when washing or taking a shower, and this can become very trying. Amfibi was created to provide extremely high comfort. The seated Amfibi user is able to assume a position for the best possible comfort. The hygiene chair quickly adapts to a personal fit with the aid of easily operated settings, and all models are height-adjustable.

The Amfibi's seat and back are adapted for an upright posture that does not close the pelvis. The ergonomic design minimises pressure on the hips, tendons and blood vessels, while its rounded front edge contributes to a comfortable leg position. The new, soft, water-repellent backrest that provides the best possible comfort and hygiene is unique to Amfibi (accessory). It is easily adjustable for best support and seat depth.

GATE hygiene chairs are available in three different versions. Amfibi Double is our most advanced, versatile hygiene chair; it is adjustable in height and tilt angle of inclination. Amfibi XL was designed for the bigger, heavier patient, while Basic is our simplest version.



## Other Commodes in the Amfibi™ range



**Amfibi™**  
Basic Hygiene Commode



**Amfibi™**  
Double Hygiene Commode



**Amfibi™**  
Double HighBack  
Hygiene Commode

## Also Available



**Bure™**  
Rise & Go™



**Bure™**  
StandTall Walkers

**Amfibi Basic** was developed to meet most basic needs. With its attractive price it provides a lot of hygiene chair at low cost. **Basic** has adjustable seat height and a wide range of accessories that make it easy to individually adapt the chair to suit every patient's needs.

**Amfibi Double** is GATE's most advanced and versatile hygiene chair. It is equipped with twin electric drives, electrically operated raising and lowering and electrically operated tilt. The chair can be adjusted steplessly even when the patient is in the chair.

**Amfibi Double HighBack** is a further development of our much appreciated Amfibi concept. It is equipped with a high, upholstered back with upholstered back including neck rest and integrated seat with rear opening.

**Bure Rise & Go** is an all-round solution that saves space, time and money. Instead of purchasing both hoists and walkers it is probably often sufficient to acquire the flexible, cost effective **Bure Rise & Go**.

Apart from being an excellent aid for getting patients up and about, the **StandTall Walker** is also a valuable rehabilitation tool. Rehabilitation using the **StandTall Walker** keeps the patient's muscles and alimentary canal active and contributes to improving the general condition of the otherwise bedridden.



Distributed by:

For more information, or to find your nearest dealer, call us on 1300 791 404 or visit [www.gaterd.com.au](http://www.gaterd.com.au)

